

FIT

*Built to Move
Born to Compete*

**THE EVOLUTION OF
SPORTS FABRICS**

*2022 Collection
by ZakeSports*

Quick-Dry

MICRO CHECK HEXAGON MESH | QD001

Composition: 100% polyester

Knit machine: 28G

Weight(+/-3%): 160gsm

Width(valid): 170cm

Color fastness: 3-4 grade or 4 grade

Lab dip tips: ABC in 10cm*10cm under D65

Kg per roll: 20-25kgs

Loading quantity: 20GP loads around 6500kgs



Anti-microbial

50D SILVER ION FABRIC | AM001

Composition: 100% polyester

Knit machine: 28G

Weight(+/-3%): 100-110gsm

Width(valid): 150-160cm

Color fastness: 3-4 grade or 4 grade

Lab dip tips: ABC in 10cm*10cm under D65 light source

Kg per roll: 20-25kgs

Loading quantity: 20GP loads around 6500kgs



COOLMAX

COOLMAX KNIT PIQUE FABRIC | CM001

Composition: 55% coolmax + 45% coolpass polyester

Knit machine: 28G

Weight(+/-3%): 140-160gsm

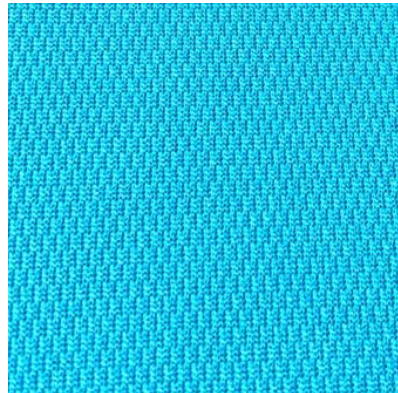
Width(valid): 160-180cm

Color fastness: 3-4 grade or 4 grade

Lab dip tips: ABC in 10cm*10cm under D65 light source

Kg per roll: 20-25kgs

Loading quantity: 20GP loads around 6500kgs



Anti-Static

ANTISTATIC PIQUE FABRIC | AS001

Composition: 98.5% T + 1.5% carbon

Knit machine: 28G

Weight(+/-3%): 160-170gsm

Width(valid): 150-175cm

Features: Anti-static, Tear-resistant, Anti-pilling

Color fastness: 3-4 grade or 4 grade

Lab dip tips: ABC in 10cm*10cm under D65 light source

Kg per roll: 20-25kgs



Bamboo

BAMBOO CHARCOAL ZIN ION | BB001

Composition: 50% bamboo charcoal + 50% zin ion polyster

Knit machine: 28G

Weight(+/-3%): 140-150gsm

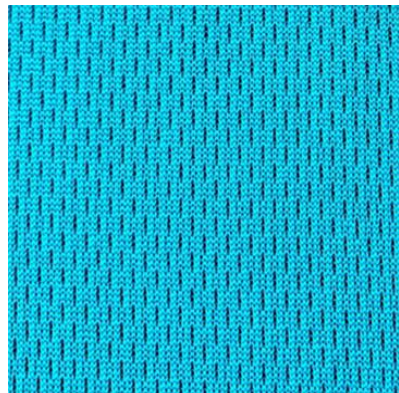
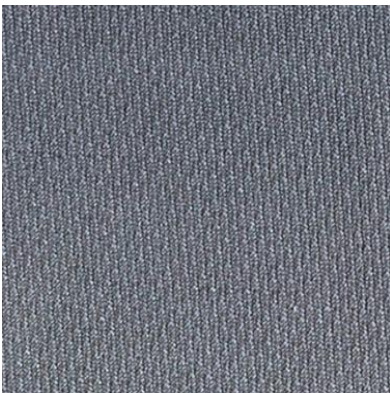
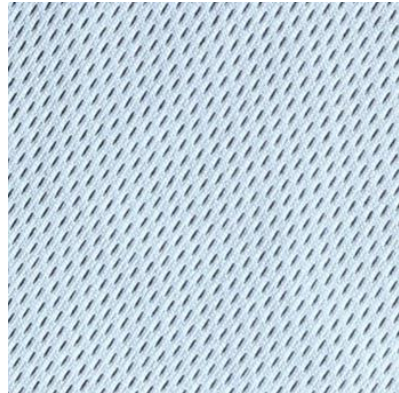
Width(valid): 160-180cm

Features: Quick-dry, anti-bacterial, anti-odor

Color fastness: 3-4 grade or 4 grade

Lab dip tips: ABC in 10cm*10cm under D65 light source

Kg per roll: 20-25kgs



Anti-Pilling

REPREVE DOUBLE LAYERS FLEECE | AP001

Composition: 100% Recycled Polyester

Weight(+/-3%): 300gsm

Yarn Count: 150D/144F+200D/96F

Width(valid): 150cm

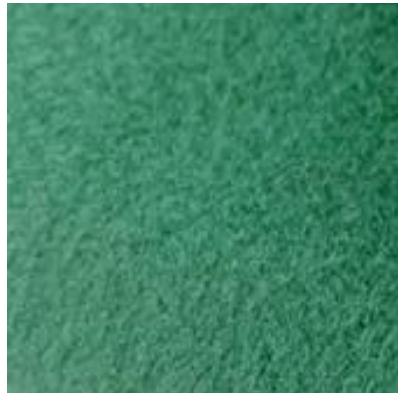
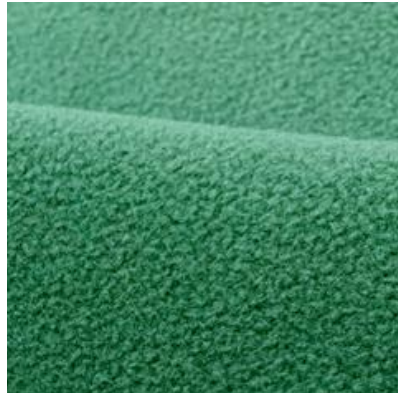
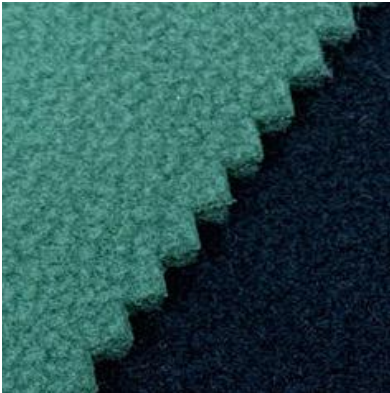
Features: Anti Pilling, thermal storage

Color fastness: 3-4 grade or 4 grade

Sample size: 40X40X3 cm

Sample weight: 0.600 kg

Kg per roll: 20-25kgs



MICAX-COOLING

COLD FEELING NYLON PIQUE | MC001

Composition: 45% polyester 55% nylon

Knit machine: 28G

Weight(+/-3%): 160gsm

Width(valid): 150cm

Features: cold feeling, Shrink-Resistant, anti-pilling

Color fastness: 3-4 grade or 4 grade

Lab dip tips: ABC in 10cm*10cm under D65 light source

Kg per roll: 20-25kgs



WaterProof

30D DOUBLE-SIDED INTERLOCK | WP001

Composition: 100% polyester

Knit machine: 36G

Weight(+/-3%): 65-75gsm

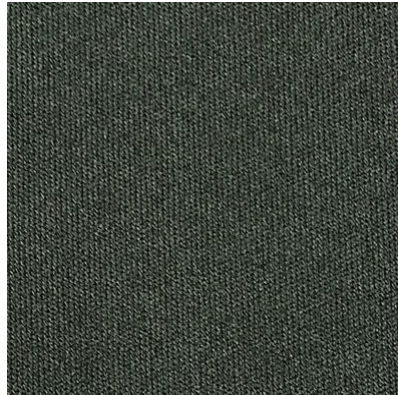
Width(valid): 150-160cm

Color fastness: 3-4 grade or 4 grade

Lab dip tips: ABC in 10cm*10cm under D65 light source

Kg per roll: 18-21kgs

Loading quantity: 20GP loads around 5000kgs



Anti-Bacterial

75D SILVER ION COTTONWOOL | AB001

Composition: 100% polyester

Knit machine: 28G

Weight(+/-3%): 130-140gsm

Width(valid): 160cm

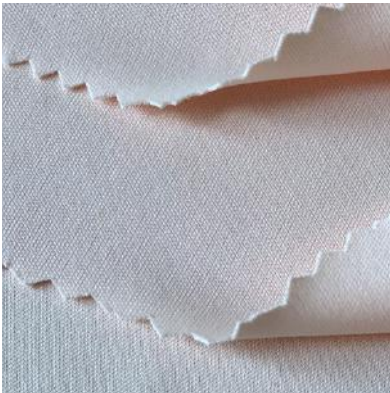
Color fastness: 3-4 grade or 4 grade

Usage: shirts, garment, sportswear, uniform etc

Lab dip tips: ABC in 10cm*10cm under D65 light source

Kg per roll: 20-25kgs

Loading quantity: 20GP loads around 7000kgs



Top-Elasticity

ULTIMATE STRETCHABLE SPANDEX | HE001

Composition: 82% polyester + 18% spandex

Yarn count: 100D

Weight(+/-3%): 280gsm

Width(cutable): 160cm

Knitted type: Weft

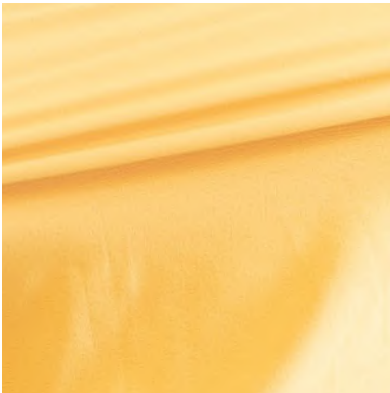
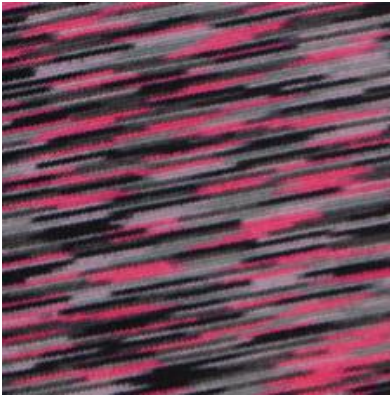
Elongation at break: 650%

Color fastness: 3-4 grade or 4 grade

Lab dip tips: ABC in 10cm*10cm under D65 light source

Kg per roll: 20-25kgs

Loading quantity: 20GP loads around 8500kgs



THERMA-FLEX

THERMAL REFLECTIVE FINISH | TF001

Composition: 100% Polyester

Yarn count: 50D

Weight(+/-3%): 70gsm

Width(cuttable): 160cm

Type: woven

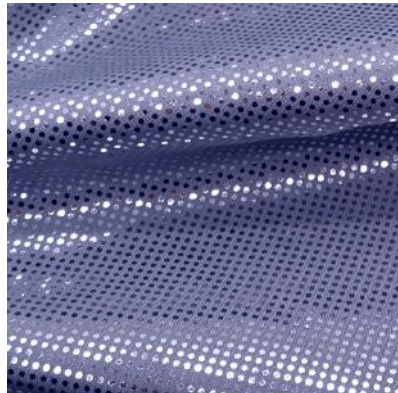
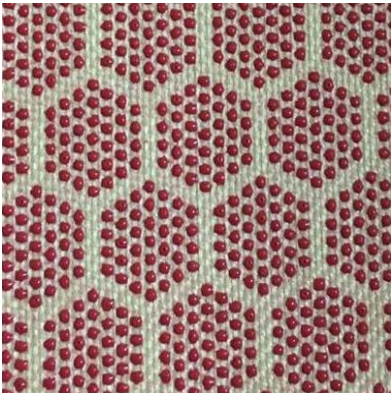
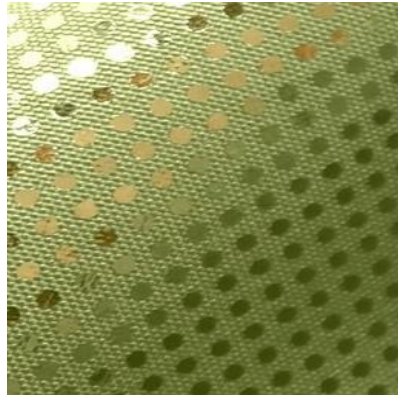
Feature: Heat-Insulation, Shrink-Resistant, Anti-Static

Color fastness: 3-4 grade or 4 grade

Lab dip tips: ABC in 10cm*10cm under D65 light source

Kg per roll: 20-25kgs

Loading quantity: 20GP loads around 5000kgs



Ultra-Light

SGS RIPSTOP FLOFFY WOVEN | UL001

Composition: 100% nylon

Yarn count: 15D

Weight(+/-3%): 32gsm

Width(cuttable): 160cm

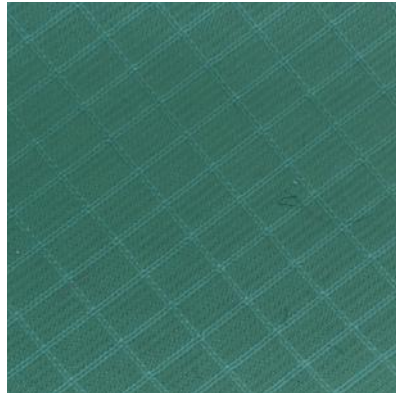
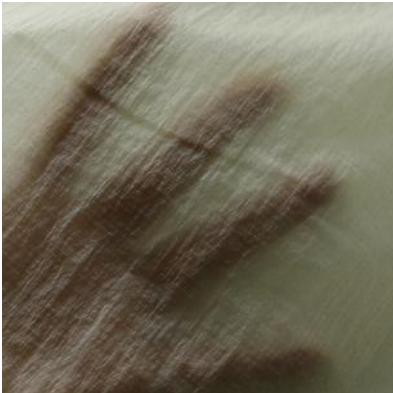
Type: woven

Color fastness: 3-4 grade or 4 grade

Lab dip tips: ABC in 10cm*10cm under D65 light source

Kg per roll: 20-25kgs

Loading quantity: 20GP loads around 5000kgs



High-Reflectivity

3M WATERPROOF SAFETY USE | RF001

Composition: 100% polyester

Yarn count: 60D

Weight(+/-3%): 130gsm

Width(cutttable): 140cm

Color fastness: 3-4 grade or 4 grade

Type: Plain weave

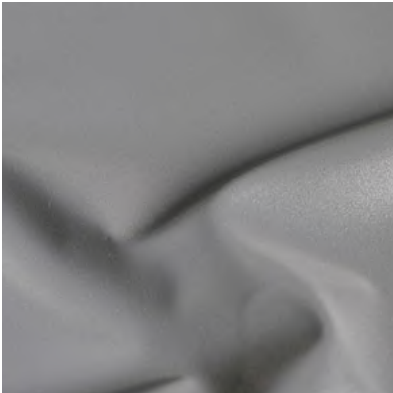
Extra: a coating to help resist dye migration

Standard: ANSI/ISEA 107 and CSA Z96

Lab dip tips: ABC in 10cm*10cm under D65 light source

Kg per roll: 20-25kgs

Loading quantity: 20GP loads around 7500kgs



Tencel-Denim

ALL TYPE OF DENIM FABRIC SUPPLIER | TD001

Composition: 100% Tencel

Specification: 20sb*20sb

Weight(+/-3%): 180gsm (AW)

Density: 96*60

Width(cuttable): 150cm

Color fastness: 3-4 grade or 4 grade

Texture: 2/1

Kg per roll: 20-25kgs

Loading quantity: 20GP loads around 7500kgs



Fire-Retardant

FIA CERTIFIED DUPONT SUIT | FR001



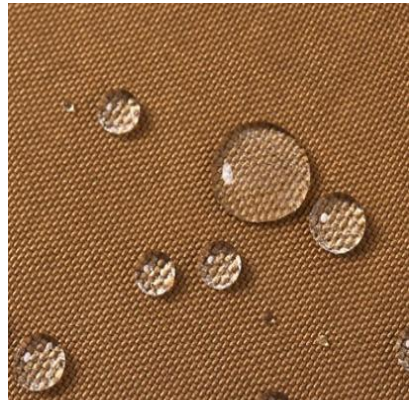
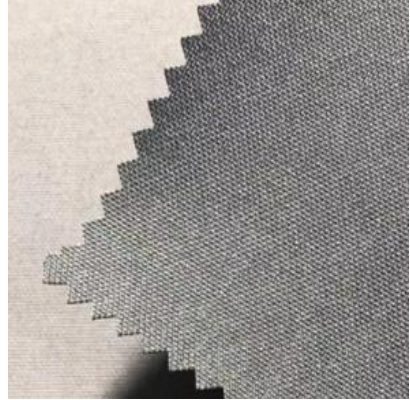
Adventure

DELTA-WING FLYING SUIT & SPELUNKING SPORTS SUIT
SMAV01



Riding Gear

WATERPROOF DURABLE CORDURA BALLISTIC | RG001



Special-Garments

SMART HEATING & COOLING SYSTEM | SMSG01

气泡垫肩
缓解肩部受力

Bubble shoulder pad
Relieve shoulder stress

肩部磁吸扣

Magnetic snap
on shoulder

隐藏式快拆系统

Hidden quick
release system

前后幅内部
可插入防弹插板

Bulletproof plates can
be inserted into the
front and rear panels

前后幅磁吸扣

Front and rear
magnetic snap



仿生式制冷

Bionic refrigeration

温度传感器

Temperature sensor

防火阻燃

Fire retardant

温控系统

恒温22°C

多功能口袋

Multifunctional pocket

Temperature control system
Constant temperature 22 °C

供电系统

Power supply system



WHAT ELSE

FUNCTIONAL KNIT
JACQUARD FABRIC
SUBLIMATION PRINTING
NBA JERSEY FABRIC
CLIMACOOOL MESH
THERMAL INSULATION
MOISTURE WICKING
WATER VAPOUR TRANSMISSION
LYCRA (80% + 20%)
NEOPRENE SUIT
SPORTS FLEECE
ORGANIC COTTON
BAMBOO JERSEY
Gore-Tex

... ..



Operating in a 3,600sqm workplace and owning over 40 machines. Annual capacity reaches more than 3,000 tons.

**ONLY TO SERVE THE BEST QUALITY
ALL-AROUND INSPECTIONS ARE WELCOME
FREE OF CHARGE SAMPLES ARE AVAILABLE**



*Room 401-410, 8 Gao'erfu Ave, Shenzhen, China 528000
info@zakesports.com*

